

The mwe Package

Martin Scharrer
martin@scharrer-online.de

CTAN: <http://www.ctan.org/pkg/mwe>

VC: https://bitbucket.org/martin_scharrer/mwe

Version v0.5 – 2018/03/30

Abstract

The `mwe` CTAN package comes with a small \LaTeX package which loads packages commonly used to create minimal working examples (MWEs) and with a collection of dummy images. The idea is that these images are installed in the \TeX MF tree in a way where they are accessible by any document. Then MWEs with images can be shared by multiple users without the need of image replacement code or the `dummy` option of `graphicx`.

1 Introduction and Motivation

\LaTeX has a large online-community and people can find a lot of help from other users on places like `comp.text.tex` or <http://tex.stackexchange.com/>. In many cases the user with the problem is required to post a code example which shows the use-case, but nothing unrelated, and should be compilable by other people without extra effort. Such an example is often called a *minimal working example* (MWE), or sometimes only *minimal example*. Users can use this example document to test if the issue also occurs in their \LaTeX installation and easily implement and test solutions. If a solution is found the modified example can be posted back to the original user. For general questions like ‘How to do X’, answers often create an example document by themselves.

There are some packages which are very useful for MWEs (and mostly only for these), like the `lipsum` and `blindtext` packages. Both produce dummy text in the document which is required to produce realistic scenarios for e.g. float placement etc. This frees the user from typing or copying larger dummy texts by himself, which would also increase the size of the example and make it less readable. The `mwe` package loads such packages and allows for a further reduction of the MWE document size.

A problem with sharing MWEs appears if image files are included in the document (e.g. `\includegraphics`, figure environments etc.). Often the image is replaced with a replacement code like `\rule{<width>}{<height>}` or the `demo` option of `graphicx` is used to replace the image with an empty frame without trying to read the given image file. Both of these methods are a little cumbersome and have other issues. For once, an explanation for new users must be added to replace the code with a real `\includegraphics` or to remove the `demo` option for their final document. Another issue might arise when the example requires specific image options like

scaling or cropping, which might not be easily and completely be replicated with these replacements. Also, the compiled result will look less than a normal document with real images.

To overcome these drawbacks several real dummy images with different sizes, ratios and formats are provided with this package. Once installed in the correct directory in the TEXMF tree they will be available to all documents. This way a user can compile any MWE given to him by another person which uses these image files without requiring code replacements or sharing images. The `mwe`, which loads `graphicx`, can be used to minimise the preamble, but is not required to be loaded in order to use the images.

It should be noted that the main contribution of this CTAN package is, at least at the moment, the provided demo/test image files. The `mwe` L^AT_EX package is (in his current form) just an addition.

2 Usage

The provided image files can be included as normal using i.e. using the `graphicx` package and its `\includegraphics` [*options*] {*filename*} macro. They are also provided in source code form (.tex files) and can be included in a document using `\input`{*filename*}. They require the `tikz` package to be loaded. For this to work it is important that the images are located at the indented position in the TEXMF tree as described in section 3.

The `mwe` can be loaded in the preamble of a MWE and loads often used packages. At this moment these are only `graphicx`, `lipsum` and `blindtext`, while the last two are only loaded if they are installed. The package is not required for using the image files. If the package is loaded it will change the graphic extension list so that PDF files are used first for formats which support PDF images. Also `\graphicspath`{*example-*} is used to allow to shorten the file names to 'image..' instead of the full 'example-image...'.
Some MWE might even be better off not to use the package if specific side-effect between packages is tested.

Usage Example

```
\documentclass{article}
\usepackage{mwe}% or load 'graphicx' and 'blindtext' manually
\begin{document}
\blindtext
\begin{figure}
\includegraphics[width=.48\linewidth]{example-image-a}\hfill
\includegraphics[width=.48\linewidth]{example-image-b}
\caption{MWE to demonstrate how to place to images side-by-side}
\end{figure}
\blindtext
\end{document}
```

3 Installation

The `mwe` package has due to its nature a little uncommon installation requirements. While the normal package files are installed as normal, a variety of image files are installed in the `tex/latex/mwe/` folder, so that they can be accessed from every (MWE) document.

Multiple binary images are included which can't be build from the DTX alone without extra conversion tools. A TDS ZIP file which only needs to be unzipped over the TEXMF is also provided. This is the preferred way to install this package for end users and distribution maintainers. If a manual build is wanted change all occurrences of 'nostandalone' to 'standalone' in the DTX file. Compile all extracted TEX files with `pdflatex` and convert these files from PDF to PNG and JPG. Compile again with `latex` and `dvips` to create the EPS files (rename the PS to EPS).

Files	TEXMF Installation folder
<code>mwe.dtx</code> <code>mwe.ins</code>	<code>source/latex/mwe/</code>
<code>mwe.pdf</code> <code>README</code> <code>INSTALL</code>	<code>doc/latex/mwe/</code>
<code>mwe.sty</code>	<code>tex/latex/mwe/</code>
<code>example-image-*.tex</code> , <code>pdf</code> , <code>png</code> , <code>jpg</code> , <code>eps</code> }	<code>tex/latex/mwe/</code>
<code>example-image-?.tex</code> , <code>pdf</code> , <code>png</code> , <code>jpg</code> , <code>eps</code> }	<code>tex/latex/mwe/</code>
<code>example-image-golden*.tex</code> , <code>pdf</code> , <code>png</code> , <code>jpg</code> , <code>eps</code> }	<code>tex/latex/mwe/</code>
<code>example-grid-*.tex</code> , <code>pdf</code>	<code>tex/latex/mwe/</code>
<code>example-image-a?*.pdf</code> <code>example-image-letter*.pdf</code>	<code>tex/latex/mwe/</code>
<code>example-image-a?*.tex</code> <code>example-image-letter*.tex</code>	<code>source/latex/mwe/</code>
<code>example-movie.mp4</code>	<code>tex/latex/mwe/</code>
<code>example-movie.tex</code>	<code>source/latex/mwe/</code>

4 Provided Images

The following images are provided by `mwe`. If the `mwe` \LaTeX package is loaded the PDF version will be used instead of the PNG version and the 'example-' part of the filename may be skipped.

4.1 Normal Images

The following images are meant as dummy replacements for real images. They are provided as PDF, JPG, PNG and EPS formats in order to cover every possible use-case. They are also provides as TEX files holding the source code. The `tikz` package must be loaded in order to use them in a document. These source files originally use the `standalone` class and a preamble, but these lines have been commented out, in order to not require the `standalone` package in order to `\input` them into a MWE or test document.

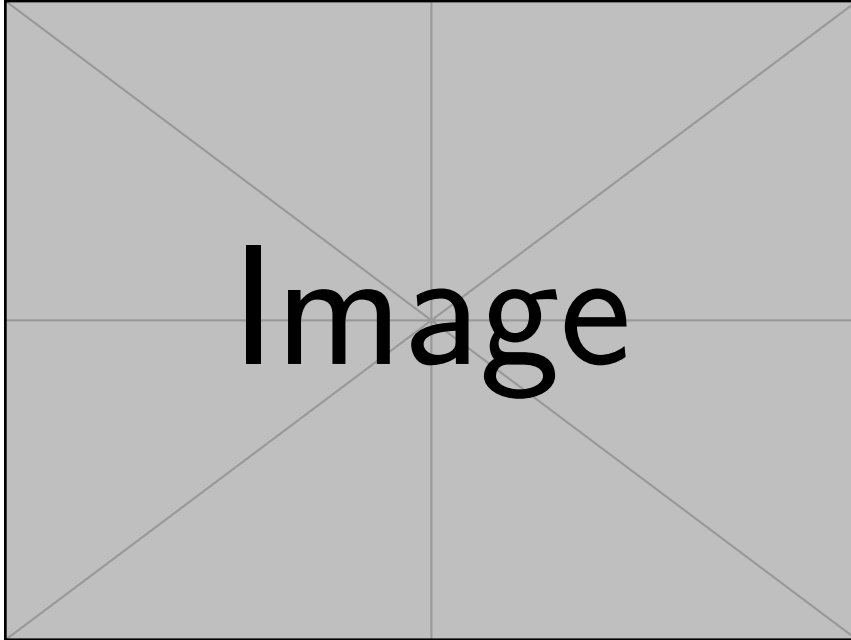


Figure 1: Image 'example-image' (PDF, also available as JPG, PNG and EPS).

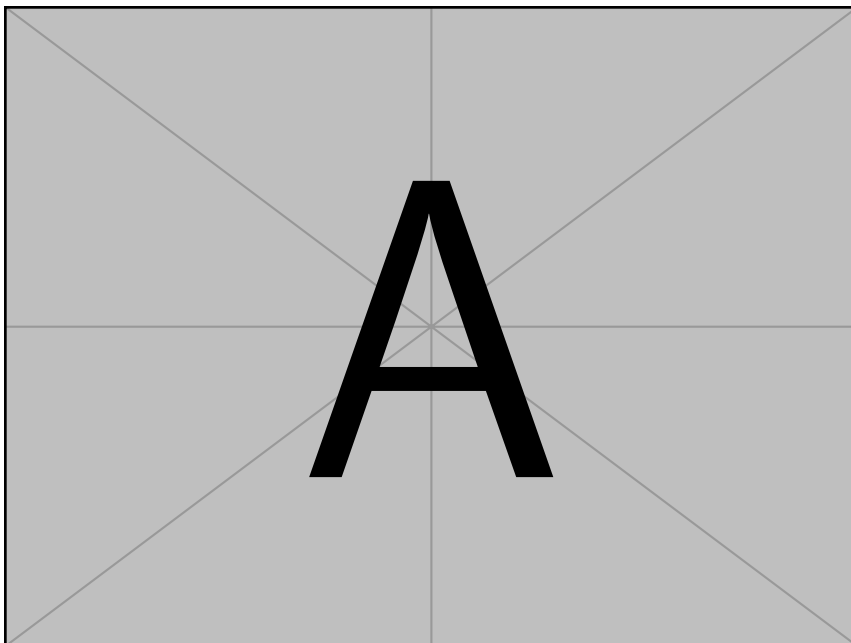


Figure 2: Image 'example-image-a' (PDF, also available as JPG, PNG and EPS).

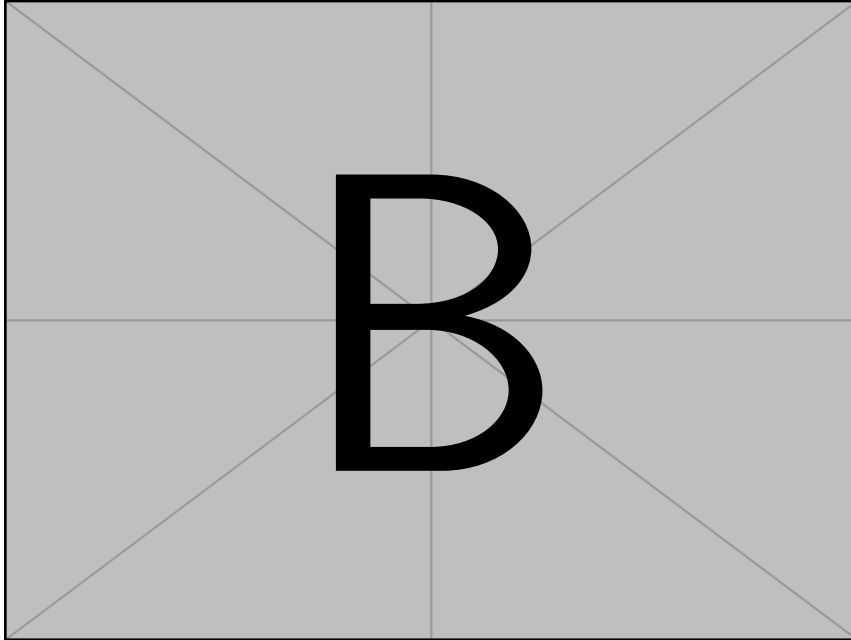


Figure 3: Image 'example-image-b' (PDF, also available as JPG, PNG and EPS).

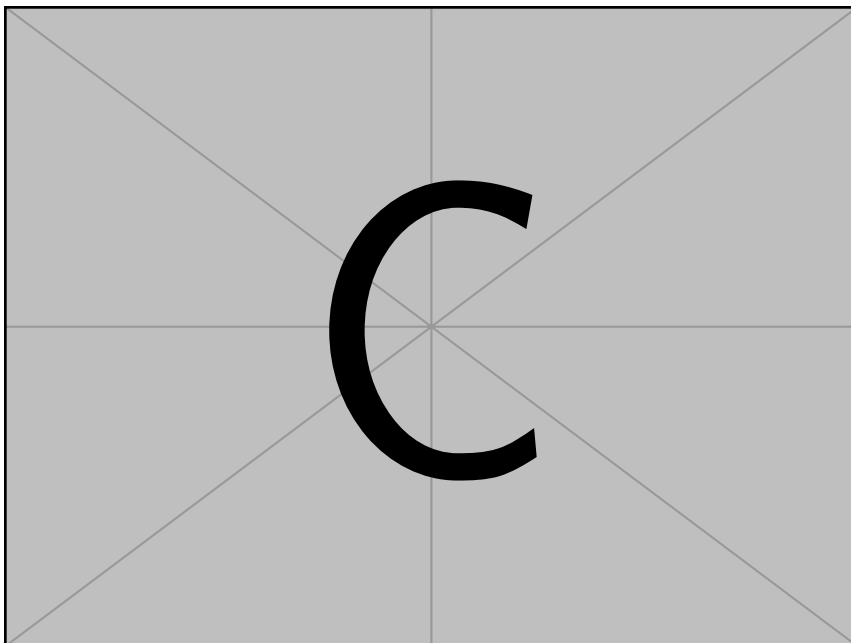


Figure 4: Image 'example-image-c' (PDF, also available as JPG, PNG and EPS).

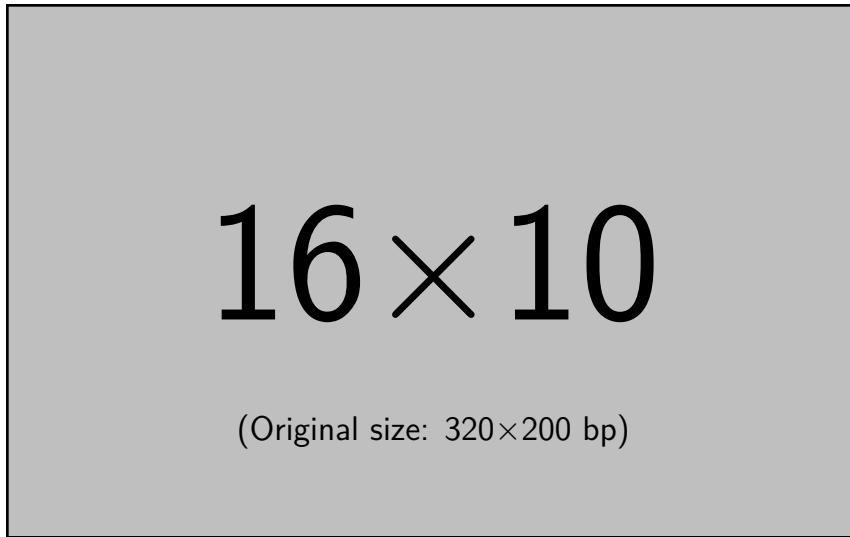


Figure 5: Image 'example-image-16x10' (PDF, also available as JPG, PNG and EPS).

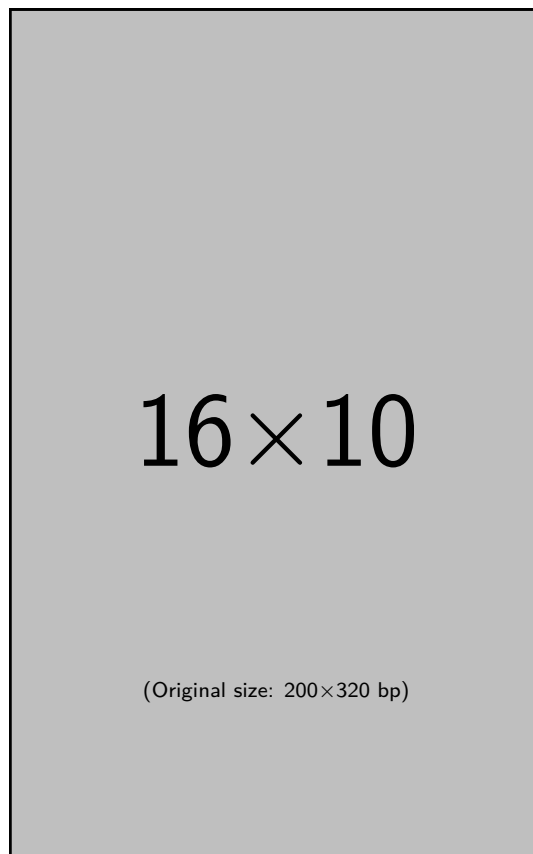


Figure 6: Image 'example-image-10x16' (PDF, also available as JPG, PNG and EPS).

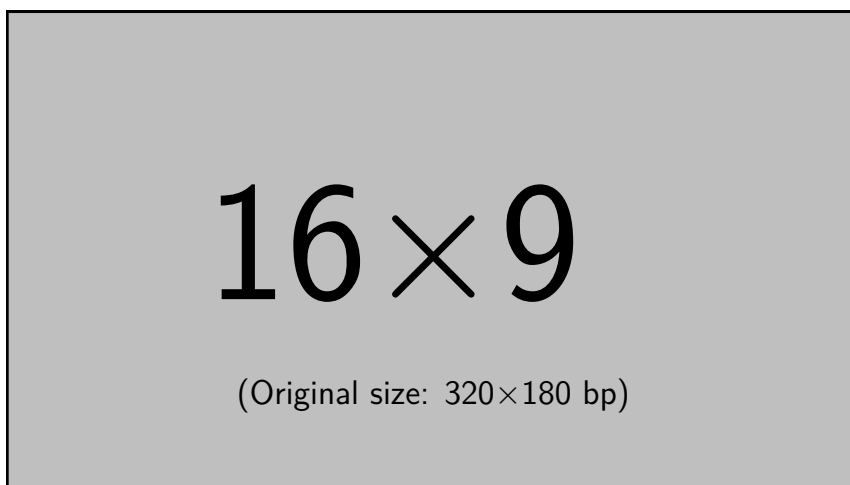


Figure 7: Image 'example-image-16x9' (PDF, also available as JPG, PNG and EPS).

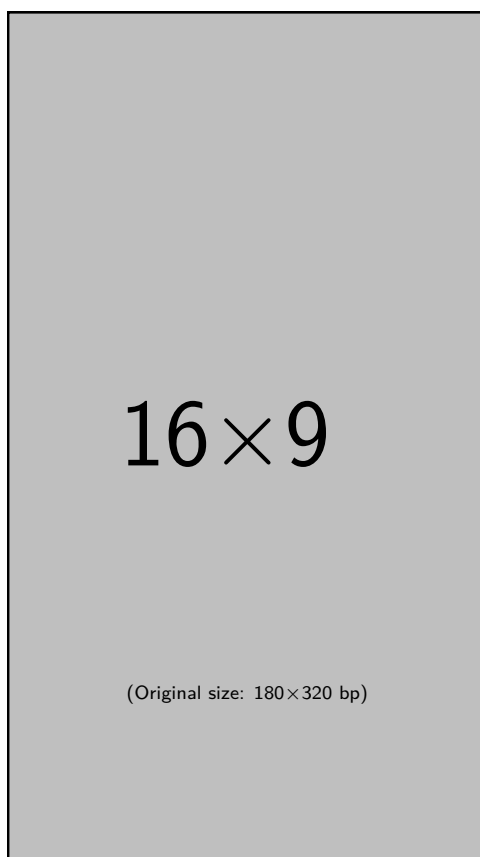


Figure 8: Image 'example-image-9x16' (PDF, also available as JPG, PNG and EPS).

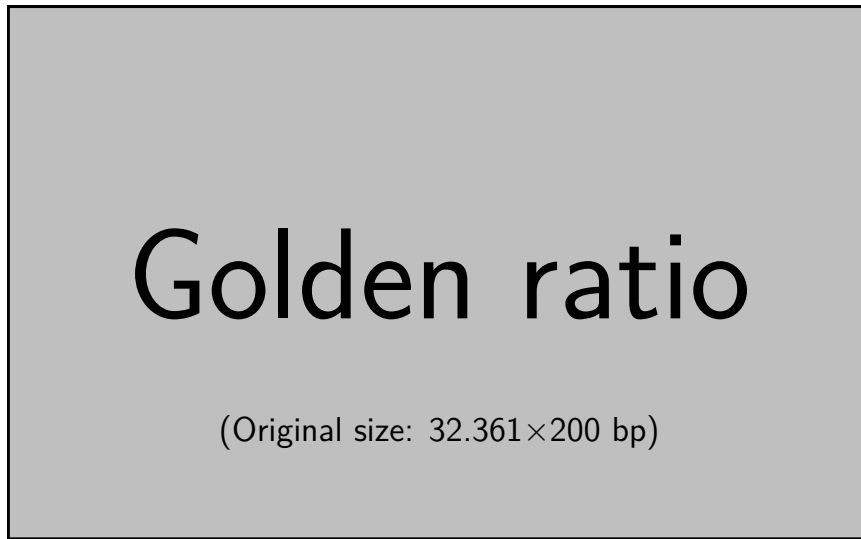


Figure 9: Image 'example-image-golden' (PDF, also available as JPG, PNG and EPS).

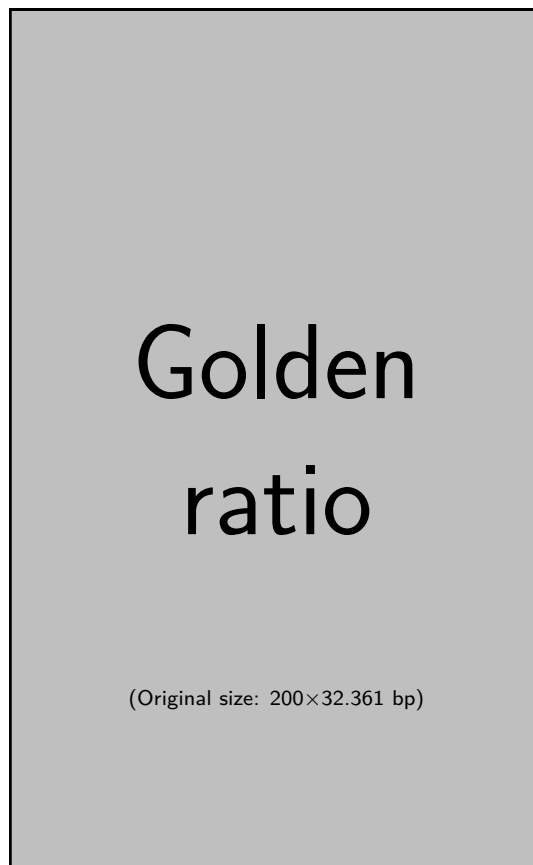


Figure 10: Image 'example-image-golden-upright' (PDF, also available as JPG, PNG and EPS).

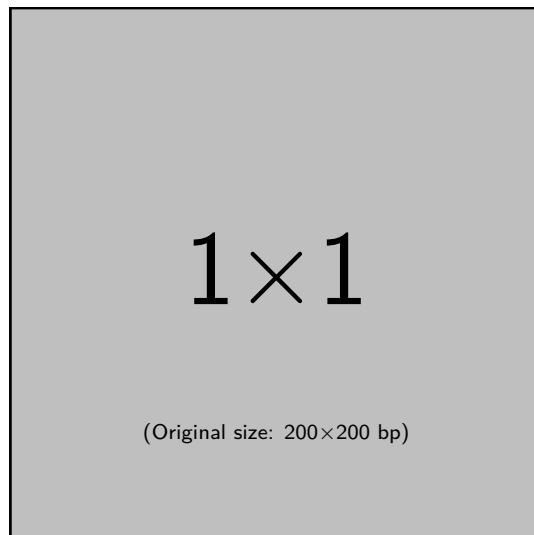


Figure 11: Image 'example-image-1x1' (PDF, also available as JPG, PNG and EPS).

4.2 Plain and empty images

The following plain (no text) and empty (background only) images were added on request for example documents where material is added on top of an image. Then any text would only cause visual distraction.

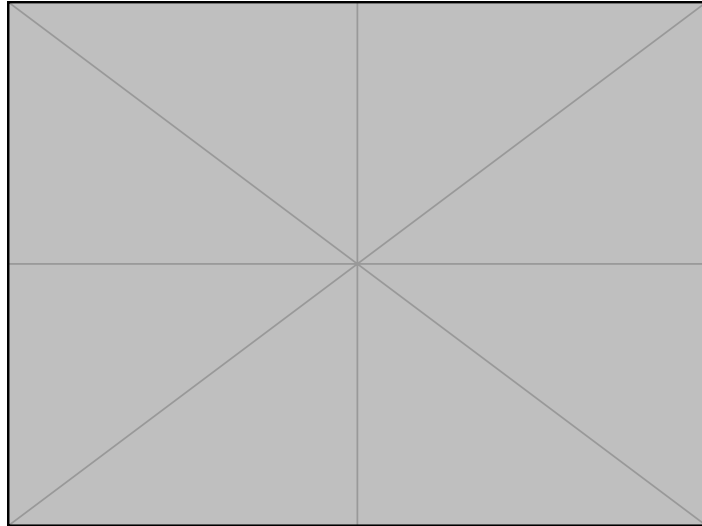


Figure 12: Image 'example-image-plain' (PDF, also available as JPG, PNG and EPS).



Figure 13: Image 'example-image-empty' (PDF, also available as JPG, PNG and EPS).

4.3 Page-size images

The following files are PDFs in a specific page size like A4, letter, etc. They are provided for use cases where whole PDF pages are included. Because these images are large they are scaled down in order to be displayed in this manual.

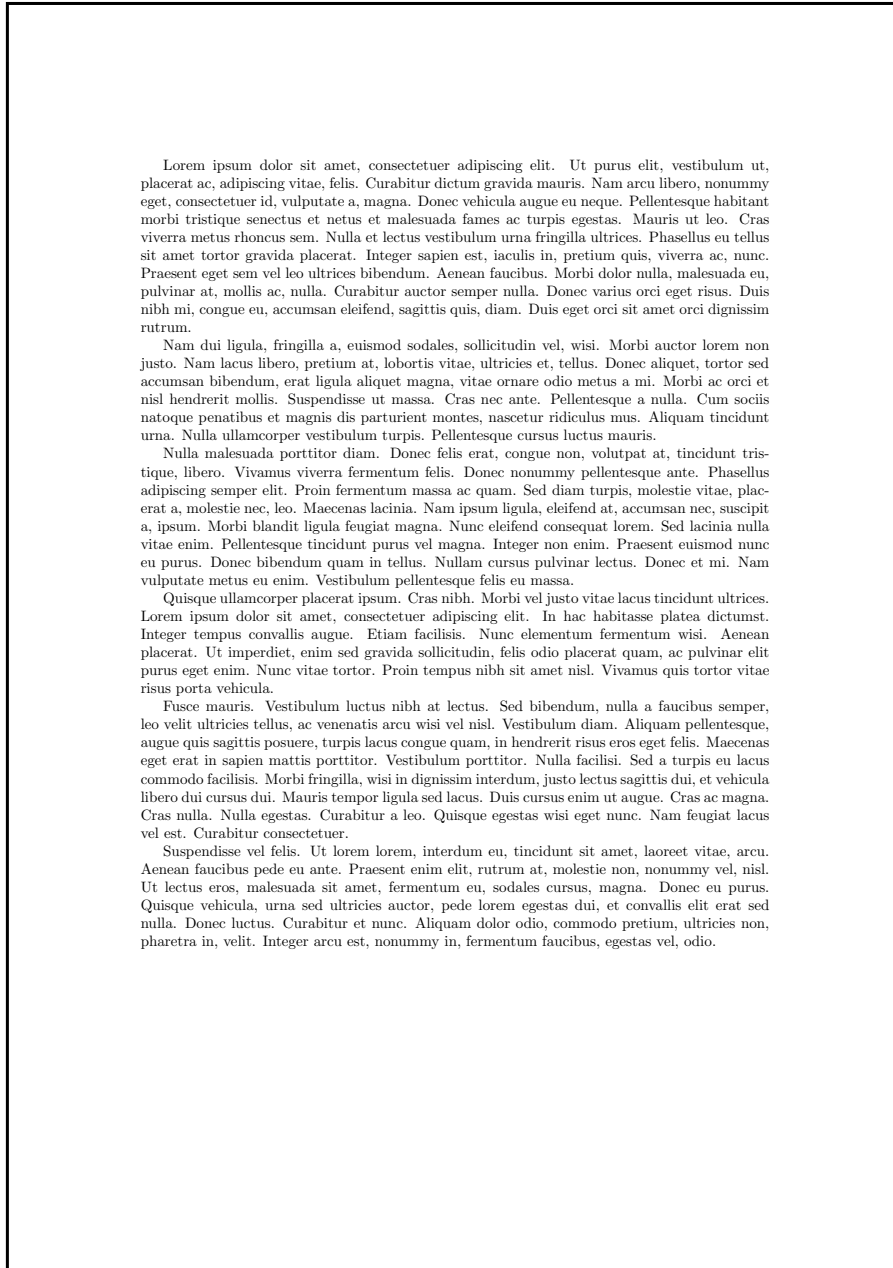


Figure 14: Image 'example-image-a4' (PDF scaled down).



Figure 15: Image 'example-image-a4-landscape' (PDF, scaled down).

Lorem ipsum dolor sit amet, consectetur adipiscing elit. Ut purus elit, vestibulum ut, placerat ac, adipiscing vitae, felis. Curabitur dictum gravida mauris. Nam arcu libero, nonummy eget, consectetuer id, vulputate a, magna. Donec vehicula augue eu neque. Pellentesque habitant morbi tristique senectus et netus et malesuada fames ac turpis egestas. Mauris ut leo. Cras viverra metus rhoncus sem. Nulla et lectus vestibulum urna fringilla ultrices. Phasellus eu tellus sit amet tortor gravida placerat. Integer sapien est, laeulis in, pretium quis, viverra ac, nunc. Praesent eget sem vel leo ultrices bibendum. Aenean faucibus. Morbi dolor nulla, malesuada eu, pulvinar at, mollis ac, nulla. Curabitur auctor semper nulla. Donec varius orci eget risus. Duis nibh mi, congue eu, accumsan eleifend, sagittis quis, diam. Duis eget orci sit amet orci dignissim rutrum.

Nam dui ligula, fringilla a, euismod sodales, sollicitudin vel, wisi. Morbi auctor lorem non justo. Nam lacus libero, pretium at, lobortis vitae, ultrices et, tellus. Donec aliquet, tortor sed accumsan bibendum, erat ligula aliquet magna, vitae ornare odio metus a mi. Morbi ac orci et nisl hendrerit mollis. Suspendisse ut massa. Cras nec ante. Pellentesque a nulla. Cum sociis natoque penatibus et magnis dis parturient montes, nascetur ridiculus mus. Aliquam tincidunt urna. Nulla ullamcorper vestibulum turpis. Pellentesque cursus luctus mauris.

Nulla malesuada porttitor diam. Donec felis erat, congue non, volutpat at, tincidunt tristique, libero. Vivamus viverra fermentum felis. Donec nonummy pellentesque ante. Phasellus adipiscing semper elit. Proin fermentum massa ac quam. Sed diam turpis, molestie vitae, placerat a, molestie nec, leo. Maecenas lacinia. Nam ipsum ligula, eleifend at, accumsan nec, suscipit a, ipsum. Morbi blandit ligula feugiat magna. Nunc eleifend consequat lorem. Sed lacinia nulla vitae enim. Pellentesque tincidunt purus vel magna. Integer non enim. Praesent euismod nunc eu purus. Donec bibendum quam in tellus. Nullam cursus pulvinar lectus. Donec et mi. Nam vulputate metus eu enim. Vestibulum pellentesque felis eu massa.

Quisque ullamcorper placerat ipsum. Cras nibh. Morbi vel justo vitae lacus tincidunt ultrices. Lorem ipsum dolor sit amet, consectetur adipiscing elit. In hac habitasse platea dictumst. Integer tempus convallis augue. Etiam facilisis. Nunc elementum fermentum wisi. Aenean placerat. Ut imperdiet, enim sed gravida sollicitudin, felis odio placerat quam, ac pulvinar elit purus eget enim. Nunc vitae tortor. Proin tempus nibh sit amet nisl. Vivamus quis tortor vitae risus porta vehicula.

Fusce mauris. Vestibulum luctus nibh at lectus. Sed bibendum, nulla a faucibus semper, leo velit ultrices tellus, ac venenatis arcu wisi vel nisl. Vestibulum diam. Aliquam pellentesque, augue quis sagittis posuere, turpis lacus congue quam, in hendrerit risus eros eget felis. Maecenas eget erat in sapien mattis porttitor. Vestibulum porttitor. Nulla facilisi. Sed a turpis eu lacus commodo facilisis. Morbi fringilla, wisi in dignissim interdum, justo lectus sagittis dui, et vehicula libero dui cursus dui. Mauris tempor ligula sed lacus. Duis cursus enim ut augue. Cras ac magna. Cras nulla. Nulla egestas. Curabitur a leo. Quisque egestas wisi eget nunc. Nam feugiat lacus vel est. Curabitur consectetur.

Suspendisse vel felis. Ut lorem lorem, interdum eu, tincidunt sit amet, laoreet vitae, arcu. Aenean faucibus pede eu ante. Praesent enim elit, rutrum at, molestie non, nonummy vel, nisl. Ut lectus eros, malesuada sit amet, fermentum eu, sodales cursus, magna. Donec eu purus. Quisque vehicula, urna sed ultrices auctor, pede lorem egestas dui, et convallis elit erat sed nulla. Donec luctus. Curabitur et nunc. Aliquam dolor odio, commodo pretium, ultrices non, pharetra in, velit. Integer arcu est, nonummy in, fermentum faucibus, egestas vel, odio.

Sed commodo posuere pede. Mauris ut est. Ut quis purus. Sed ac odio. Sed vehicula hendrerit sem. Duis non odio. Morbi ut dui. Sed accumsan risus eget odio. In hac habitasse platea dictumst. Pellentesque non elit. Fusce sed justo eu urna porta tincidunt. Mauris felis odio, sollicitudin sed, volutpat a, ornare ac, erat. Morbi quis dolor. Donec pellentesque, erat ac sagittis semper, nunc dui lobortis purus, quis congue purus metus ultrices tellus. Proin et quam. Class aptent taciti sociosq ad litora torquent per conubia nostra, per inceptos hymenaeos. Praesent sapien turpis, fermentum vel, eleifend faucibus, vehicula eu, lacus.

Pellentesque habitant morbi tristique senectus et netus et malesuada fames ac turpis egestas. Donec odio elit, dictum in, hendrerit sit amet, egestas sed, leo. Praesent feugiat sapien aliquet odio. Integer vitae justo. Aliquam vestibulum fringilla lorem. Sed neque lectus, consectetur at, consectetur sed, eleifend ac, lectus. Nulla facilisi. Pellentesque eget lectus. Proin eu metus. Sed porttitor. In hac habitasse platea dictumst. Suspendisse eu lectus. Ut mi mi, lacinia sit amet, placerat et, mollis vitae, dui. Sed ante tellus, tristique ut, laeulis eu, malesuada ac, dui. Mauris nibh leo, facilisis non, adipiscing quis, ultrices a, dui.

Morbi luctus, wisi viverra faucibus pretium, nibh est, placerat odio, nec commodo wisi enim eget quam. Quisque libero justo, consectetur a, feugiat vitae, porttitor eu, libero. Suspendisse sed mauris vitae elit sollicitudin malesuada. Maecenas ultrices eros sit amet ante. Ut venenatis velit. Maecenas sed mi eget dui varius euismod. Phasellus aliquet volutpat odio. Vestibulum ante ipsum primis in faucibus orci luctus et ultrices posuere cubilia Curae; Pellentesque sit amet pede ac sem eleifend consectetur. Nullam elementum, urna vel imperdiet sodales, elit ipsum pharetra ligula, ac pretium ante justo a nulla. Curabitur tristique arcu eu metus. Vestibulum lectus. Proin mauris. Proin eu nunc eu urna hendrerit faucibus. Aliquam auctor, pede consequat laoreet varius, eros tellus scelerisque quam, pellentesque hendrerit ipsum dolor sed augue. Nulla nec lacus.

Suspendisse vitae elit. Aliquam arcu neque, ornare in, ullamcorper quis, commodo eu, libero. Fusce sagittis erat at erat tristique mollis. Maecenas sapien libero, molestie et, lobortis in, sodales eget, dui. Morbi ultrices rutrum lorem. Nam elementum ullamcorper leo. Morbi dui. Aliquam sagittis. Nunc placerat. Pellentesque tristique sodales est. Maecenas imperdiet lacinia velit. Cras non urna. Morbi eros pede, suscipit ac, varius vel, egestas non, eros. Praesent malesuada, diam id pretium elementum, eros sem dictum tortor, vel consectetur odio sem sed wisi.

Sed feugiat. Cum sociis natoque penatibus et magnis dis parturient montes, nascetur ridiculus mus. Ut pellentesque augue sed urna. Vestibulum diam eros, fringilla et, consectetur eu, nonummy id, sapien. Nullam at lectus. In sagittis ultrices mauris. Curabitur malesuada erat sit amet massa. Fusce blandit. Aliquam erat volutpat. Aliquam euismod. Aenean vel lectus. Nunc imperdiet justo nec dolor.

Etiam euismod. Fusce facilisis lacinia dui. Suspendisse potenti. In mi erat, cursus id, nonummy sed, ullamcorper eget, sapien. Praesent pretium, magna in eleifend egestas, pede pede pretium lorem, quis consectetur tortor sapien facilisis magna. Mauris quis magna varius nulla scelerisque imperdiet. Aliquam non quam. Aliquam porttitor quam a lacus. Praesent vel arcu ut tortor cursus volutpat. In vitae pede quis diam bibendum placerat. Fusce elementum convallis neque. Sed dolor orci, scelerisque ac, dapibus nec, ultrices ut, mi. Duis nec dui quis leo sagittis commodo.

Aliquam lectus. Vivamus leo. Quisque ornare tellus ullamcorper nulla. Mauris porttitor pharetra tortor. Sed fringilla justo sed mauris. Mauris tellus. Sed non leo. Nullam elementum, magna in cursus sodales, augue est scelerisque sapien, venenatis congue nulla arcu et pede. Ut suscipit enim vel sapien. Donec congue. Maecenas urna mi, suscipit in, placerat ut, vestibulum ut, massa. Fusce ultrices nulla et nisl.

Figure 16: Image 'example-image-a3' (PDF, scaled down).



Figure 17: Image 'example-image-a3-landscape' (PDF, scaled down).

Nam dui ligula, fringilla a, euismod sodales, sollicitudin vel, wisi. Morbi auctor lorem non justo. Nam lacus libero, pretium at, lobortis vitae, ultricies et, tellus. Donec aliquet, tortor sed accumsan bibendum, erat ligula aliquet magna, vitae ornare odio metus a mi. Morbi ac orci et nisl hendrerit mollis. Suspendisse ut massa. Cras nec ante. Pellentesque a nulla. Cum sociis natoque penatibus et magnis dis parturient montes, nascetur ridiculus mus. Aliquam tincidunt urna. Nulla ullamcorper vestibulum turpis. Pellentesque cursus luctus mauris.

Nulla malesuada porttitor diam. Donec felis erat, congue non, volutpat at, tincidunt tristique, libero. Vivamus viverra fermentum felis. Donec nonummy pellentesque ante. Phasellus adipiscing semper elit. Proin fermentum massa ac quam. Sed diam turpis, molestie vitae, placerat a, molestie nec, leo. Maecenas lacinia. Nam ipsum ligula, eleifend at, accumsan nec, suscipit a, ipsum. Morbi blandit ligula feugiat magna. Nunc eleifend consequat lorem. Sed lacinia nulla vitae enim. Pellentesque tincidunt purus vel magna. Integer non enim. Praesent euismod nunc eu purus. Donec bibendum quam in tellus. Nullam cursus pulvinar lectus. Donec et mi. Nam vulputate metus eu enim. Vestibulum pellentesque felis eu massa.

Quisque ullamcorper placerat ipsum. Cras nibh. Morbi vel justo vitae lacus tincidunt ultrices. Lorem ipsum dolor sit amet, consectetur adipiscing elit. In hac habitasse platea dictumst. Integer tempus convallis augue. Etiam facilisis. Nunc elementum fermentum wisi. Aenean placerat. Ut imperdiet, enim sed gravida sollicitudin, felis odio placerat quam, ac pulvinar elit purus eget enim. Nunc vitae tortor. Proin tempus nibh sit amet nisl. Vivamus quis tortor vitae risus porta vehicula.

Figure 18: Image 'example-image-a5' (PDF scaled down).

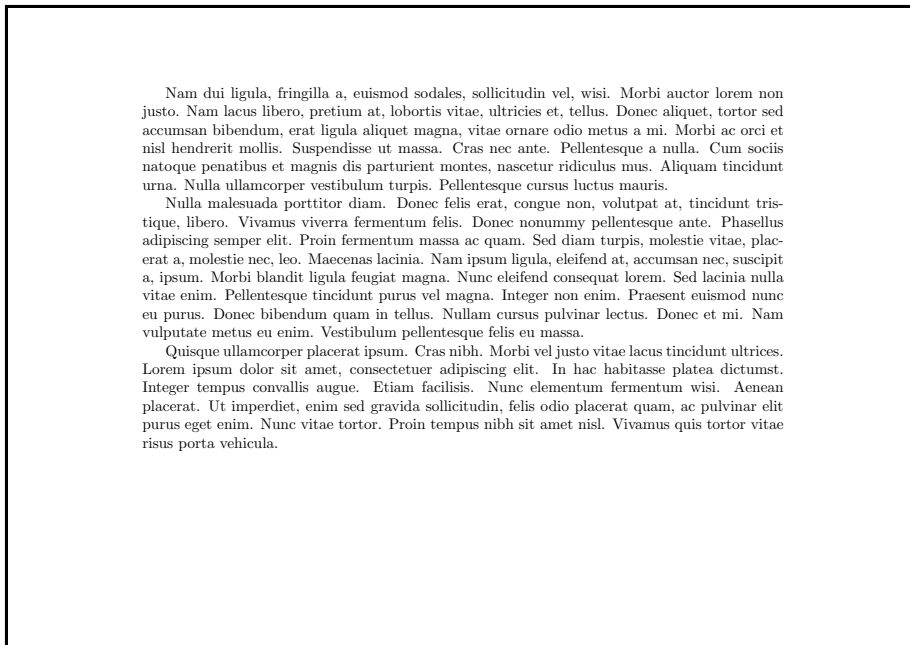


Figure 19: Image 'example-image-a5-landscape' (PDF, scaled down).

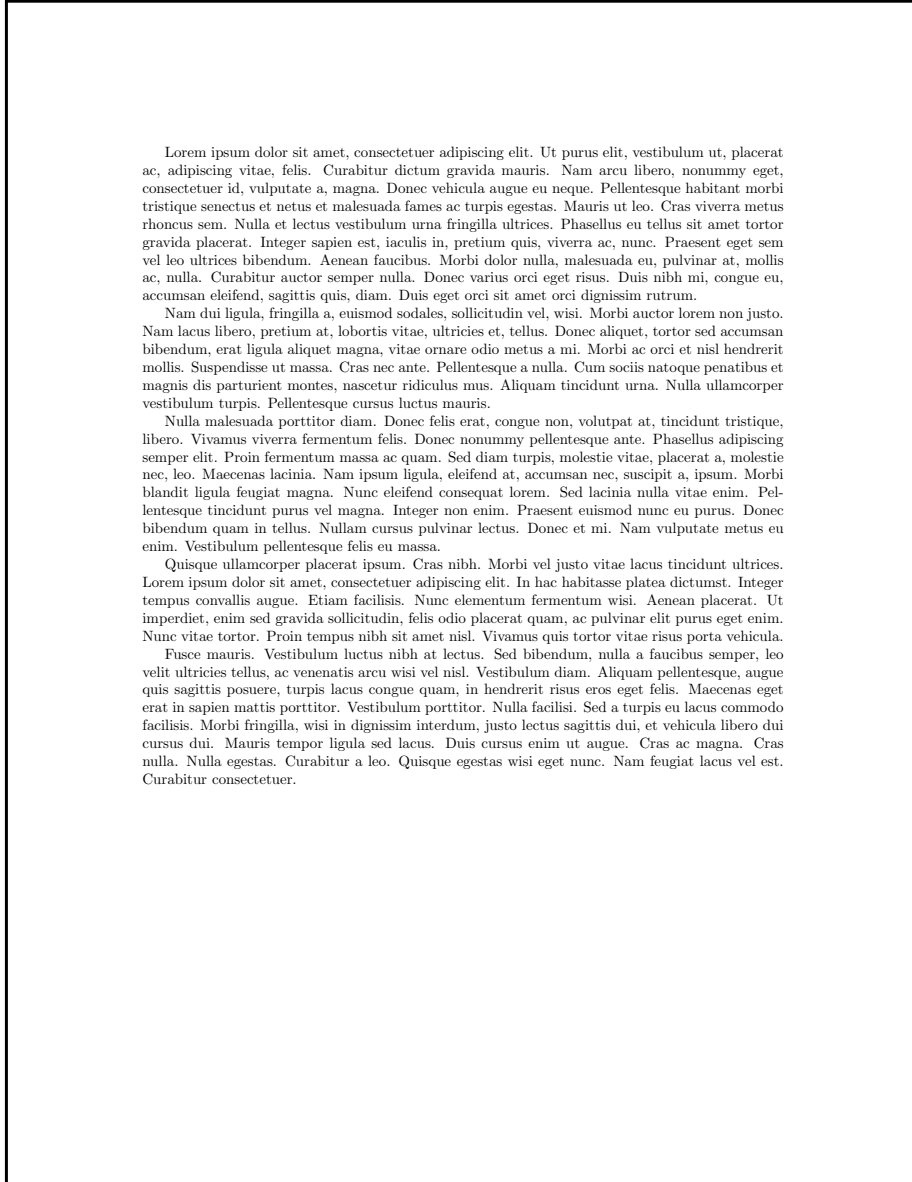


Figure 20: Image 'example-image-letter' (PDF, scaled down).

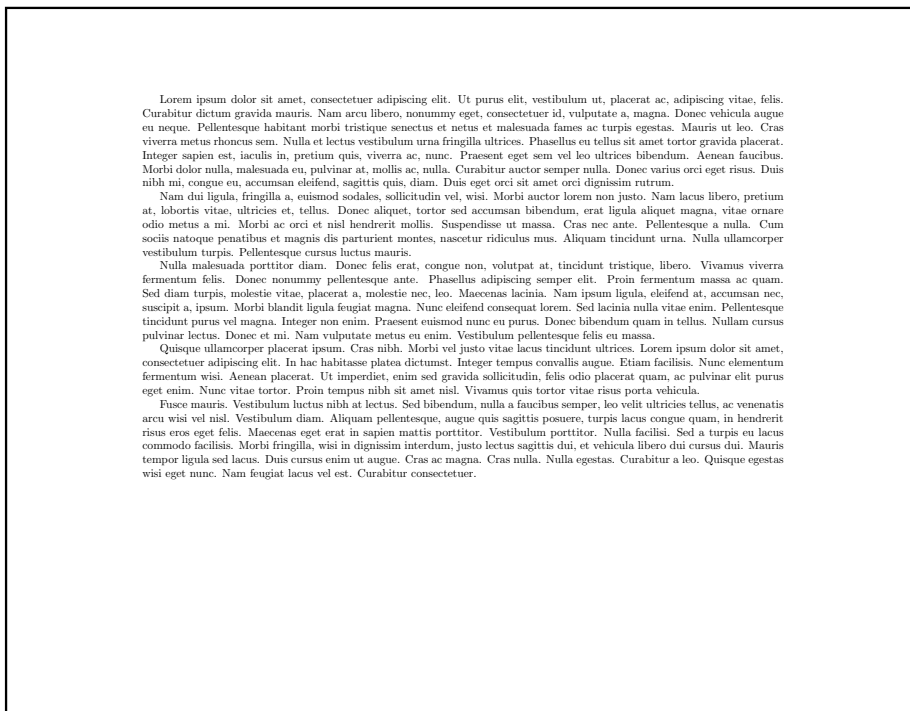


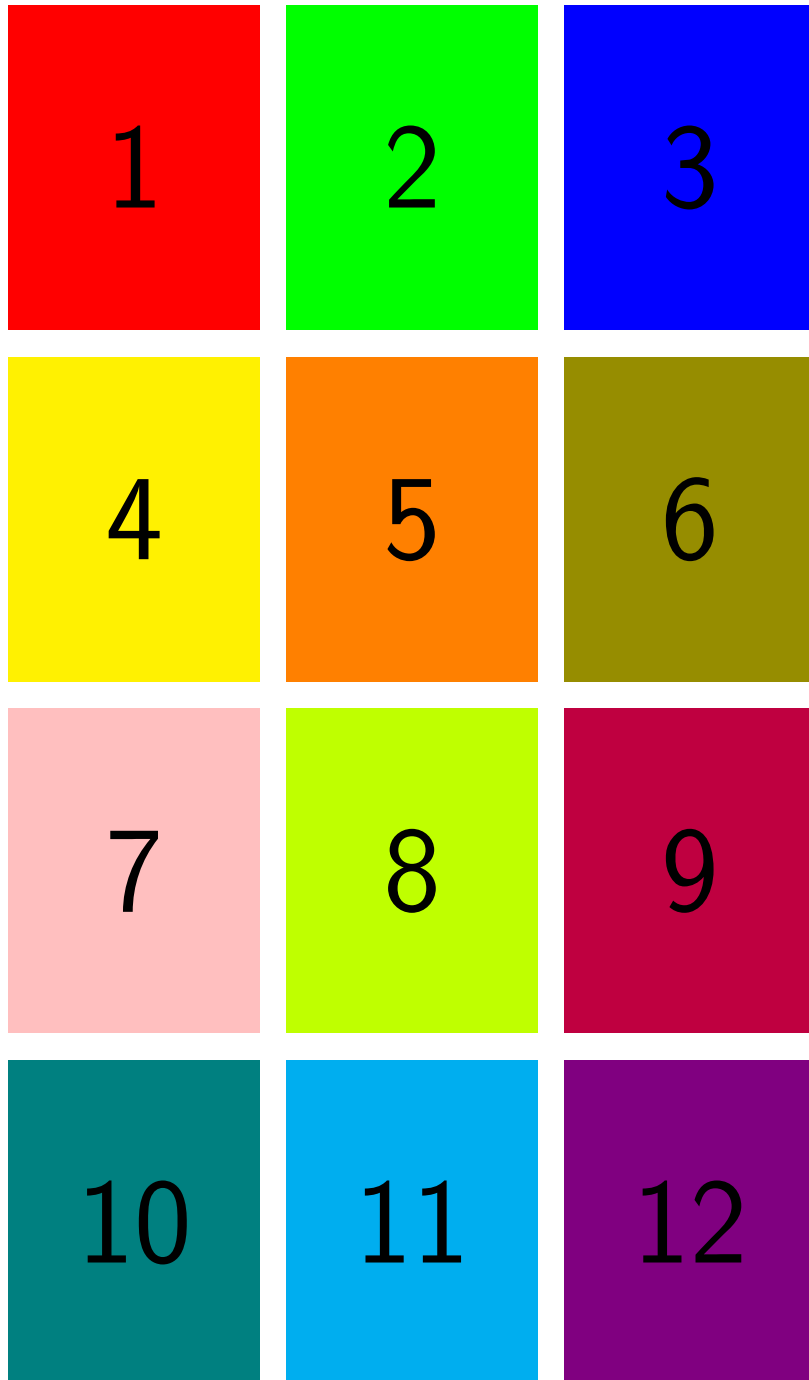
Figure 21: Image 'example-image-letter-landscape' (PDF, scaled down).

4.4 Numbered pages

Colored 12-pages A4 size document. Can be used with the pages key of `\includegraphics: example-image-a4-numbered` (pages scaled down)



Colored 12-pages letter size document: example-image-letter-numbered (pages scaled down)



4.5 Test images

The following images are intended for demonstrations of some image manipulation features. Their grid nature will make cropping effects very visible. These images are provided with sizes both in TeX points (1pt=1/72.27in) and PostScript/PDF points (1pt=1/72in). The pt version will produce more exact results if inserted in source form in a \LaTeX document, while the bp version results in nice integer PDF sizes. The difference is not meaningful for normal MWEs but can be significant if these files are used to demonstrate scaling features.

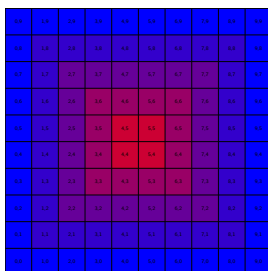


Figure 22: Image ‘example-grid-100x100bp’ (PDF, also available as JPG, PNG, EPS).

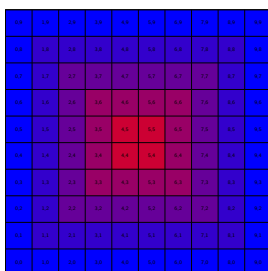


Figure 23: Image ‘example-grid-100x100pt’ (PDF, also available as JPG, PNG, EPS).

4.6 Example movie

On request an example movie file `example-movie.mp4` has been added for examples regarding packages like `media9` or `movie15`. As not all PDF viewers can display PDFs with embedded movies correctly this manual does not include an example use.

5 Example BibTeX Entries

The `mwe` package does not provide an example BibTeX file itself. However, if example BibTeX entries are needed the example file `xamp1.bib` provided by the BibTeX base files can be used.

As of time of writing this manual the example file included the following entries.

Entry Type	Key
article	article-minimal
article	article-full
article	article-crossref
article	whole-journal
inbook	inbook-minimal
inbook	inbook-full
inbook	inbook-crossref
book	book-minimal
book	book-full
book	book-crossref
book	whole-set
booklet	booklet-minimal
booklet	booklet-full
incollection	incollection-minimal
incollection	incollection-full
incollection	incollection-crossref
book	whole-collection
manual	manual-minimal
manual	manual-full
mastersthesis	mastersthesis-minimal
mastersthesis	mastersthesis-full
misc	misc-minimal
misc	misc-full
string	stoc-key
string	acm
string	stoc
inproceedings	inproceedings-minimal
inproceedings	inproceedings-full
inproceedings	inproceedings-crossref
proceedings	proceedings-minimal
proceedings	proceedings-full
proceedings	whole-proceedings
phdthesis	phdthesis-minimal
phdthesis	phdthesis-full
techreport	techreport-minimal
techreport	techreport-full
unpublished	unpublished-minimal
unpublished	unpublished-full
misc	random-note-crossref